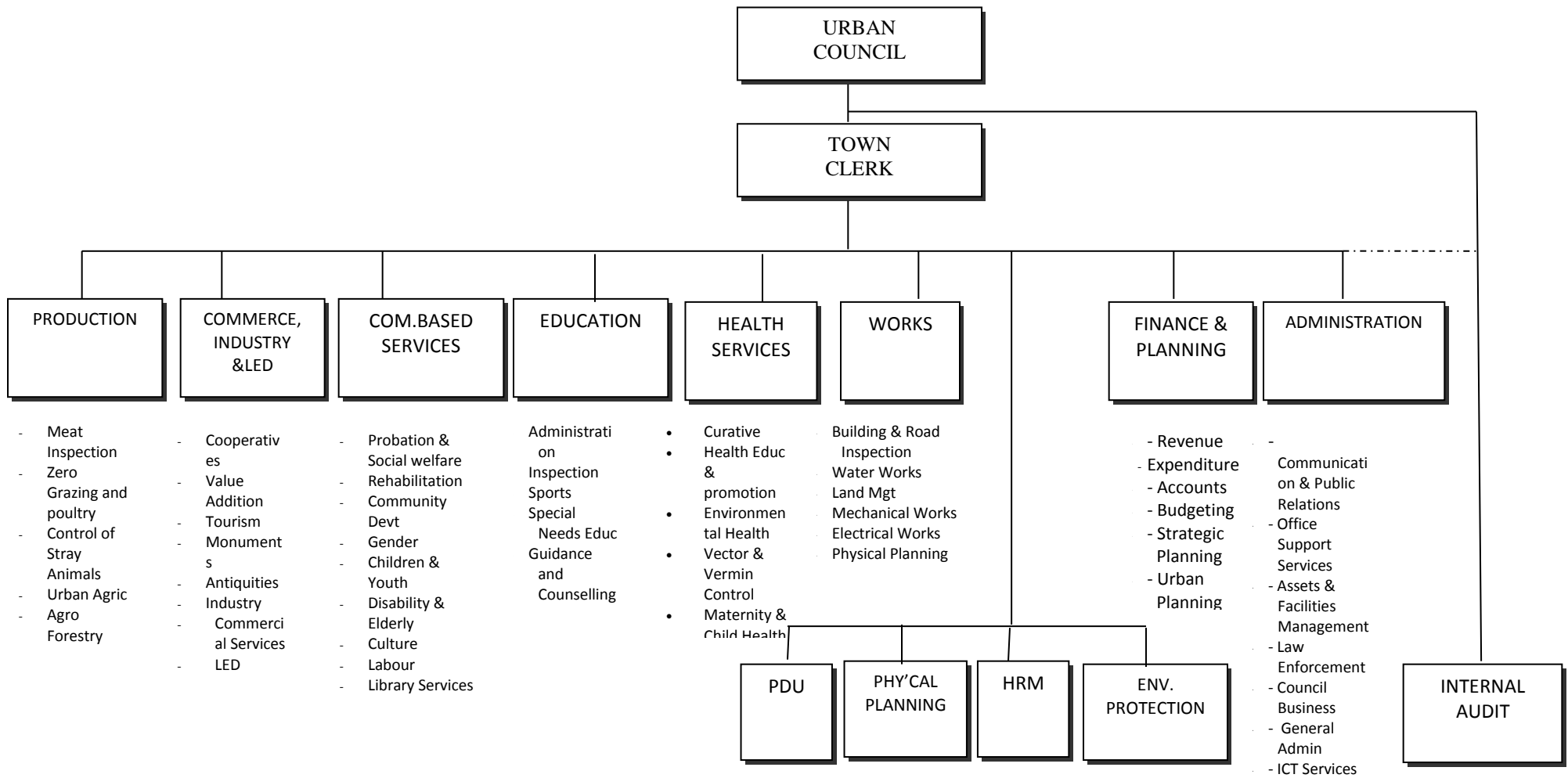
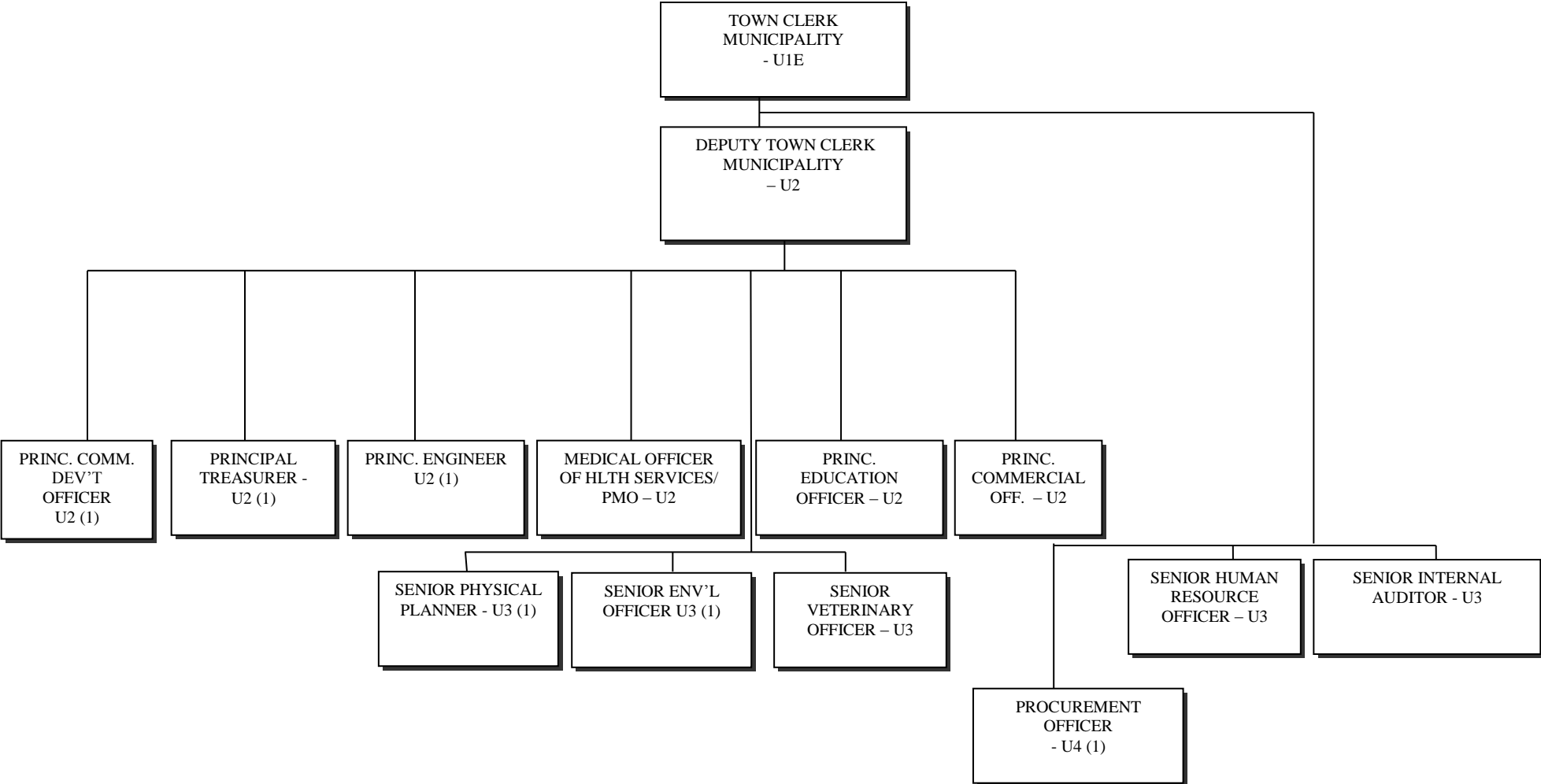


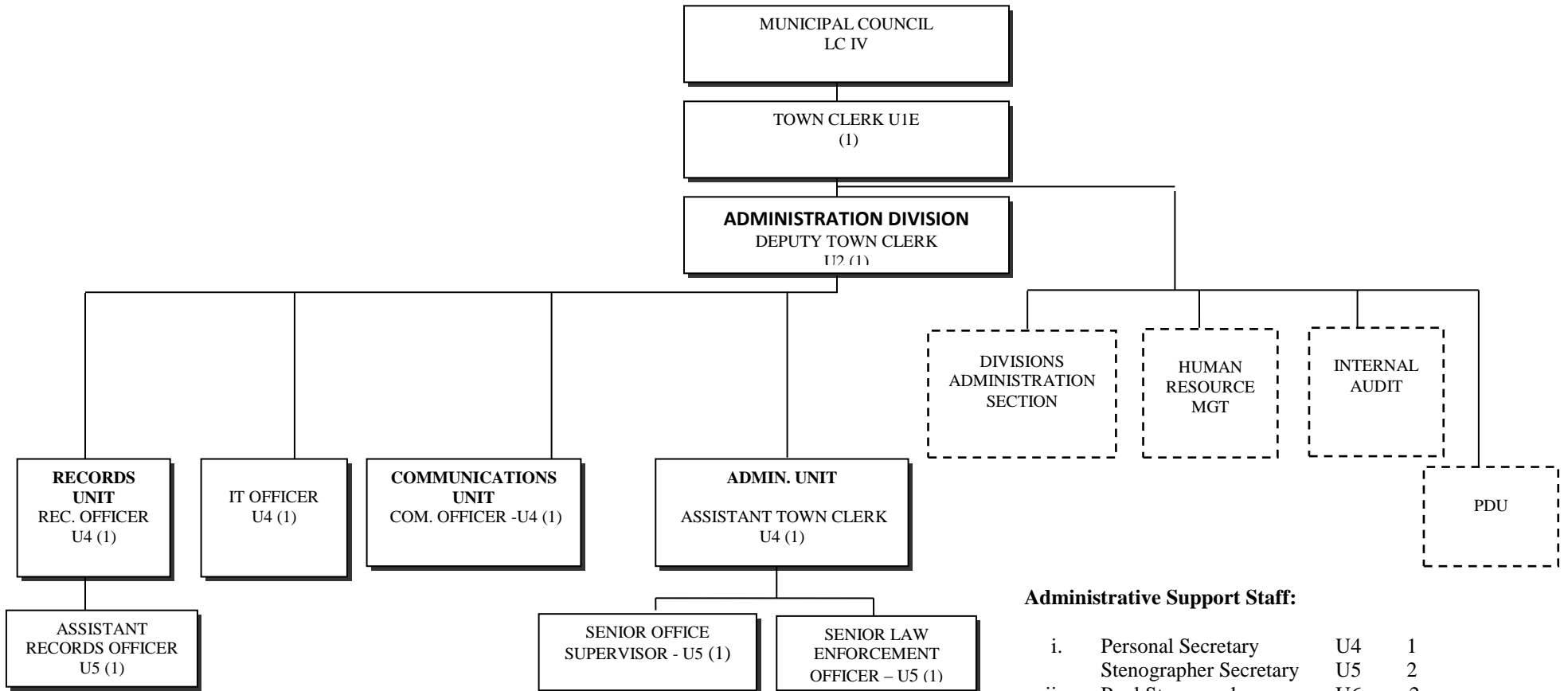
APPROVED MACRO AND FUNCTIONAL STRUCTURE FOR A MUNICIPALITY



APPROVED TOP MANAGEMENT STRUCTURE FOR A MUNICIPALITY



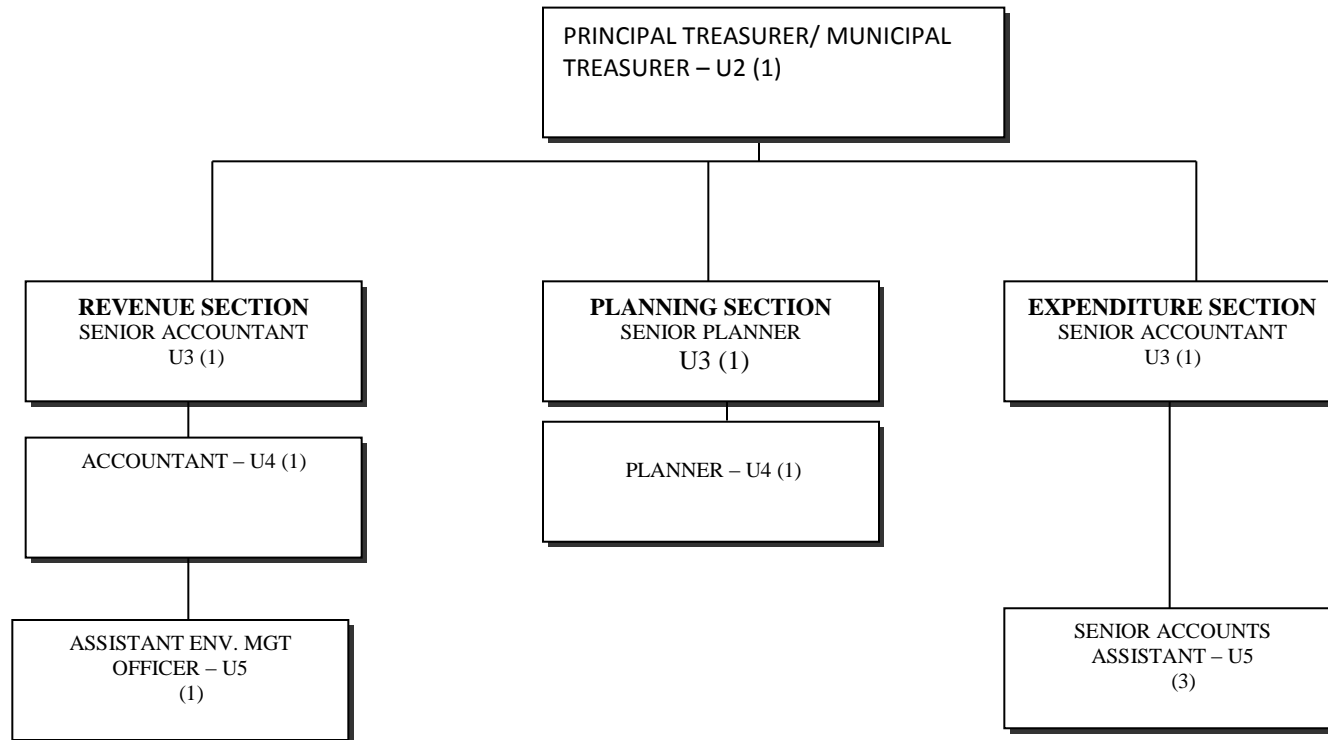
APPROVED STRUCTURE FOR ADMINISTRATION: MUNICIPALITY



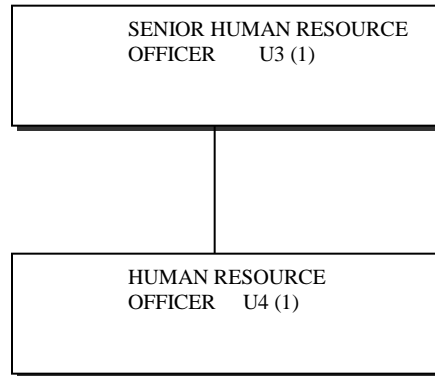
Administrative Support Staff:

- | | | | |
|------|------------------------|----|---|
| i. | Personal Secretary | U4 | 1 |
| | Stenographer Secretary | U5 | 2 |
| ii. | Pool Stenographer | U6 | 2 |
| iii. | Office Typist | U7 | 1 |
| iv. | Office Attendant | U8 | 6 |
| v. | Driver | U8 | 8 |

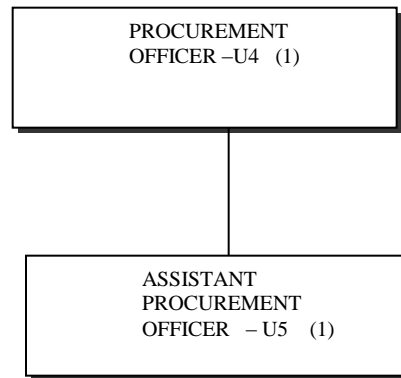
APPROVED STRUCTURE FOR THE FINANCE AND PLANNING DIVISION: MUNICIPALITY



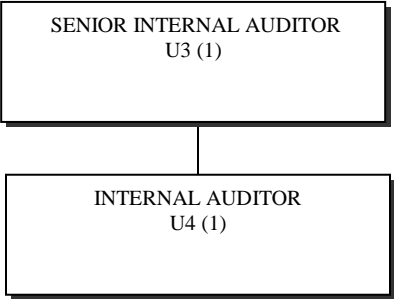
APPROVED STRUCTURE FOR THE HUMAN RESOURCE MANAGEMENT UNIT: MUNICIPALITY



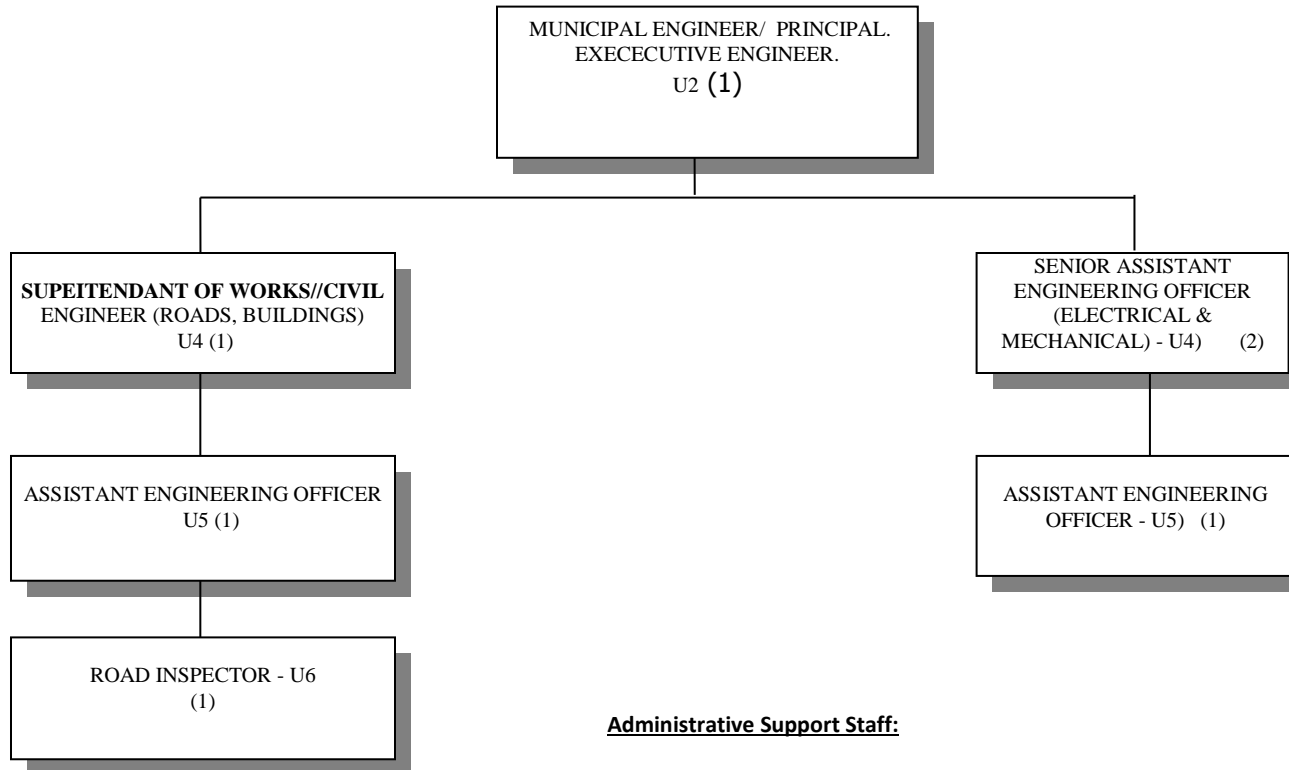
APPROVED STRUCTURE FOR THE PROCUREMENT AND DISPOSAL UNIT: MUNICIPALITY



APPROVED STRUCTURE FOR THE INTERNAL AUDIT UNIT: MUNICIPALITY



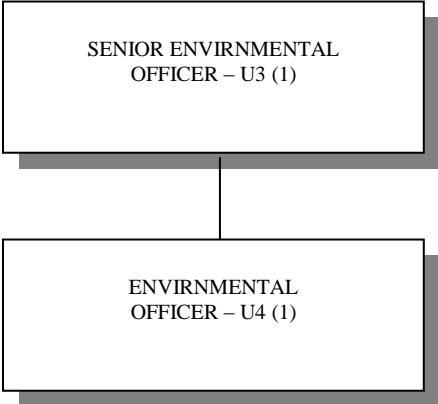
APPROVED STRUCTURE FOR THYE WORKS DIVISION: MUNICIPALITY



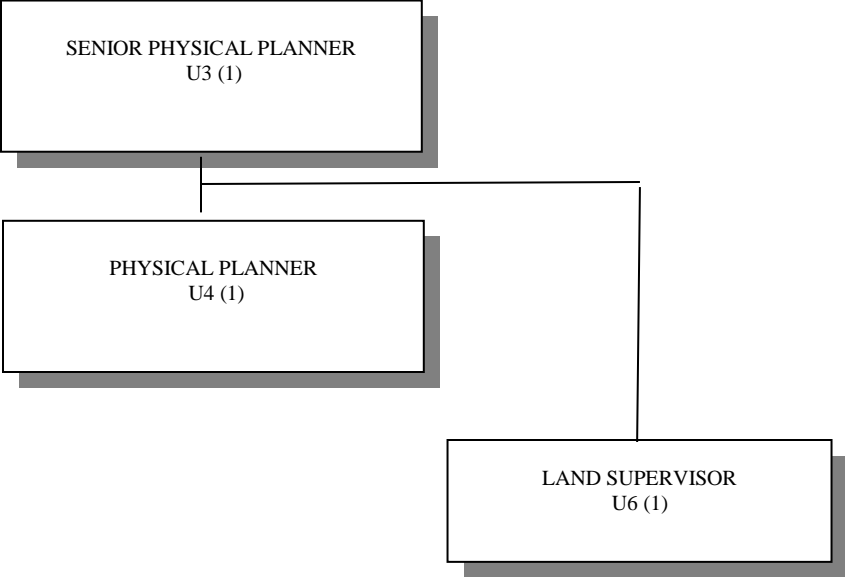
Administrative Support Staff:

Porter	U8	1
Plant Operator	U8	1
Plant attendant	U8	1

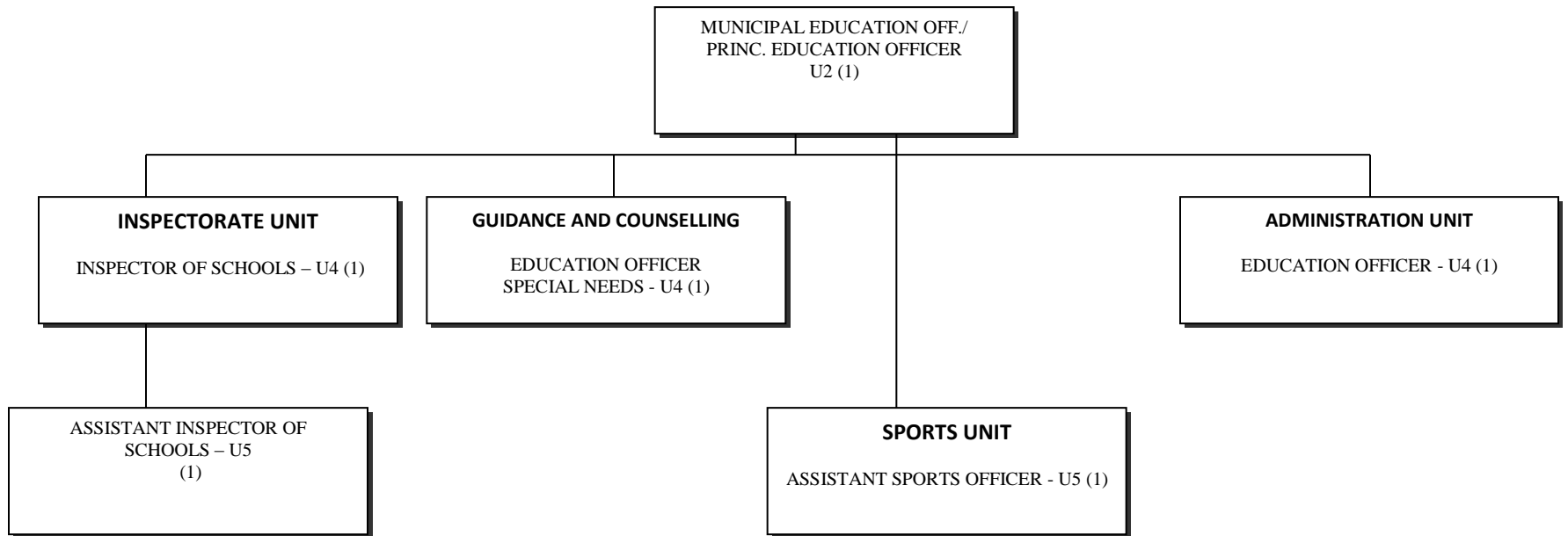
APPROVED STRUCTURE FOR THE ENVIRONMENTAL MANAGEMENT UNIT: MUNICIPALITY



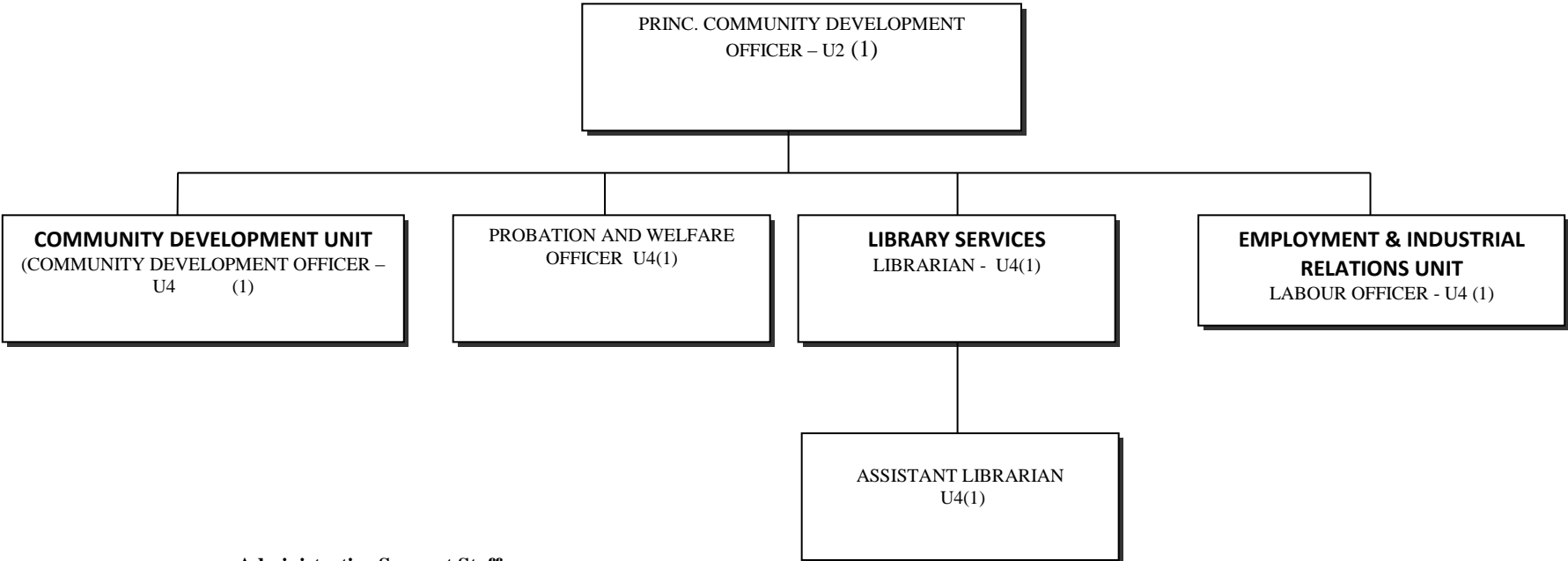
APPROVED STRUCTURE FOR PHYSICAL PLANNING ENVIRONMENTAL UNIT: MUNICIPALITY



APPROVED STRUCTURE FOR THE EDUCATION DIVISION: MUNICIPALITY



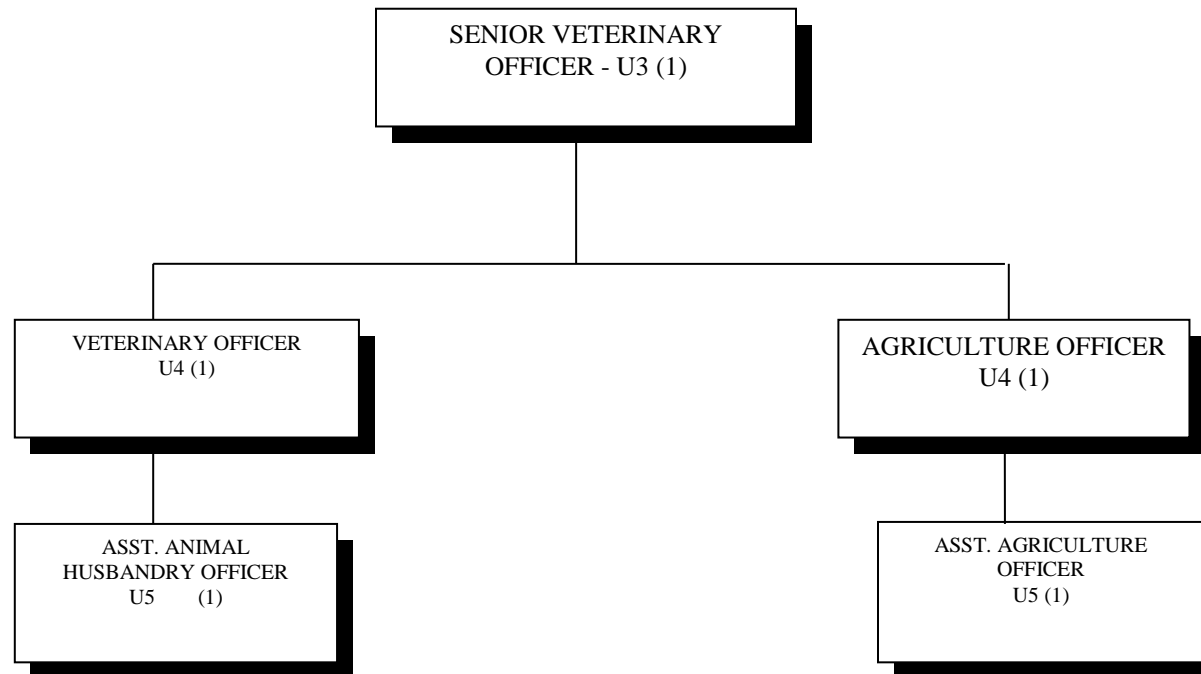
APPROVED STRUCTURE FOR THE COMMUNITY BASED SERVICES DIVISION: MUNICIPALITY



Administrative Support Staff

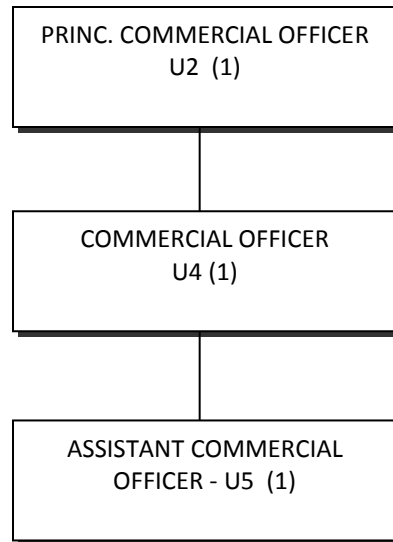
Library Attendant U8 1

APPROVED STRUCTURE FOR PRODUCTION UNIT: MUNICIPALITY

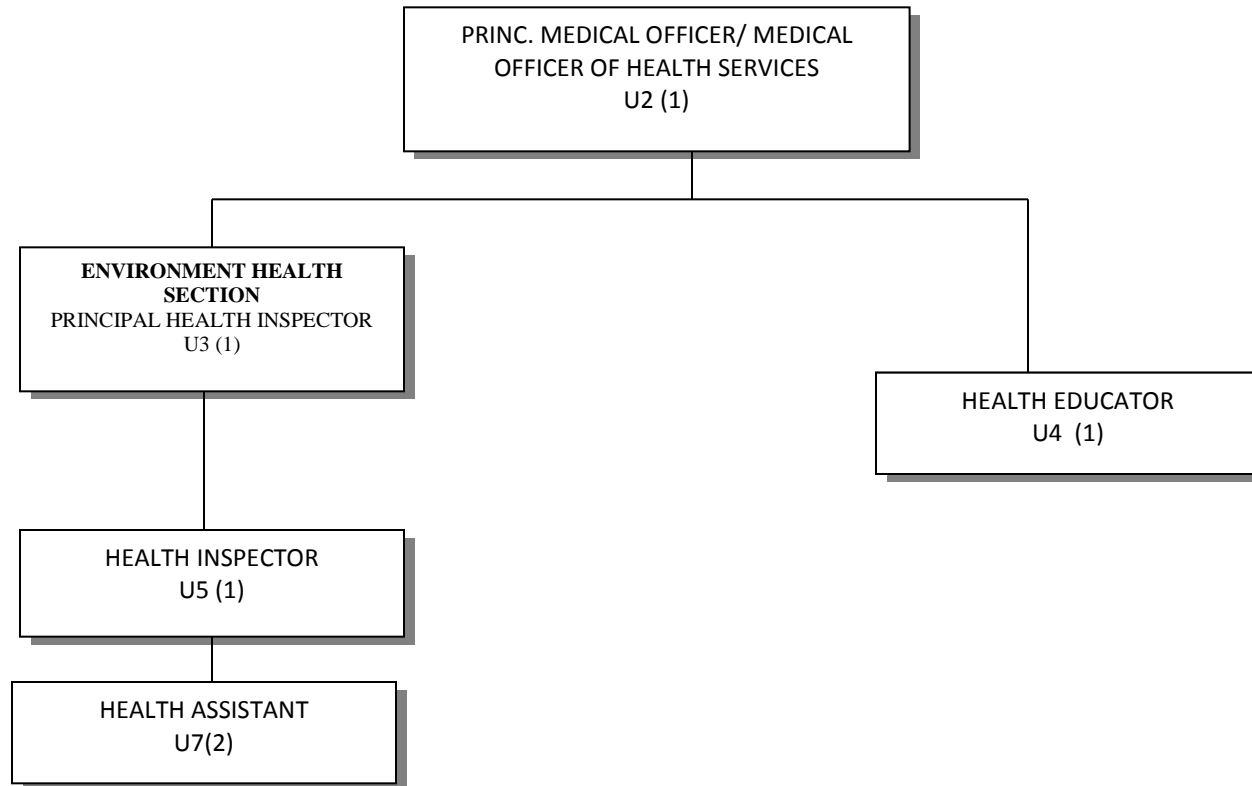


APPROVED STRUCTURE FOR COMMERCE, INDUSTRY AND LOCAL ECONOMIC DEVELOPMENT:

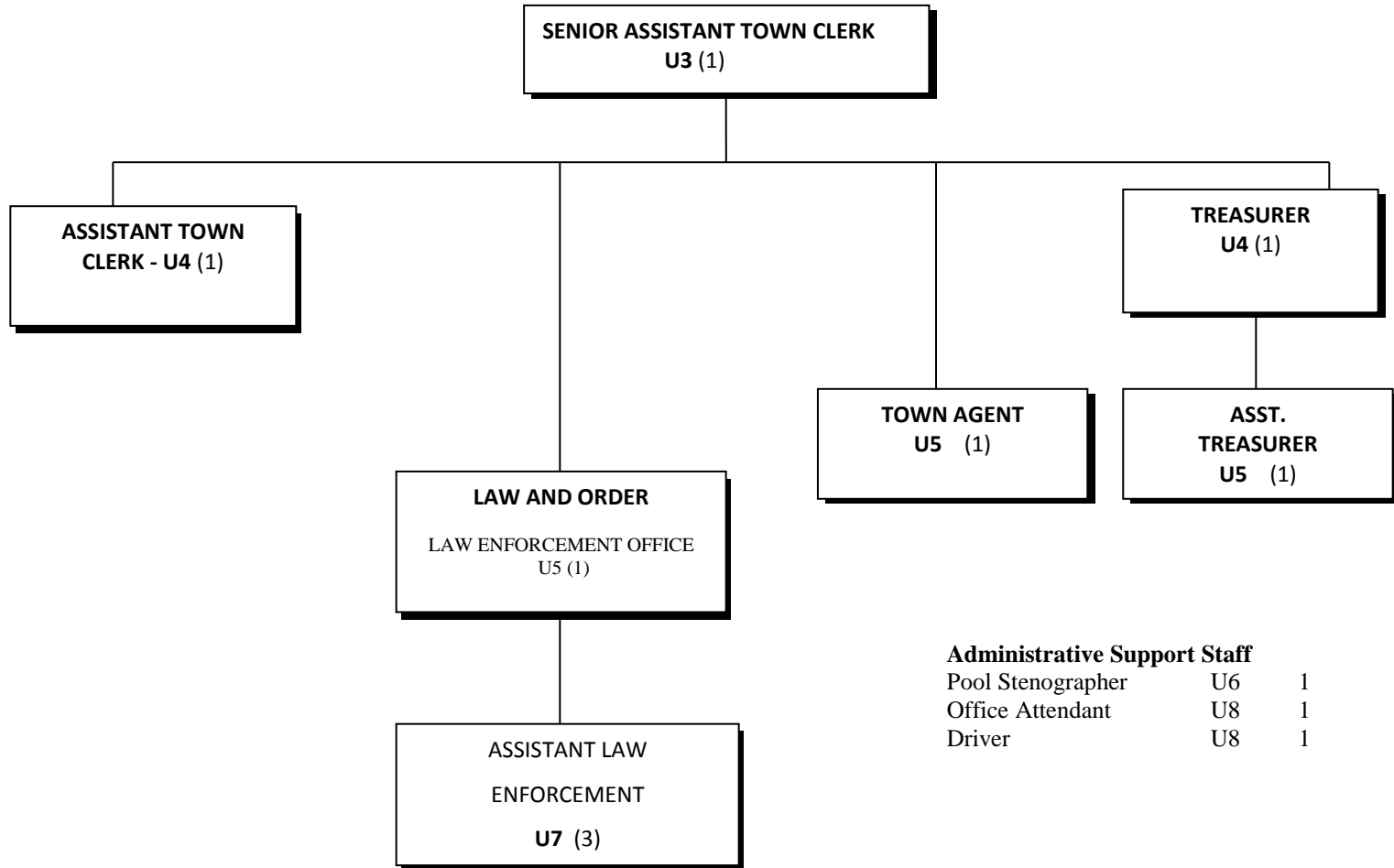
MUNICIPALITY



APPROVED STRUCTURE FOR PUBLIC HEALTH SERVICES: MUNICIPALITY



APPROVED STRUCTURE FOR A MUNICIPAL DIVISION



Administrative Support Staff

Pool Stenographer	U6	1
Office Attendant	U8	1
Driver	U8	1