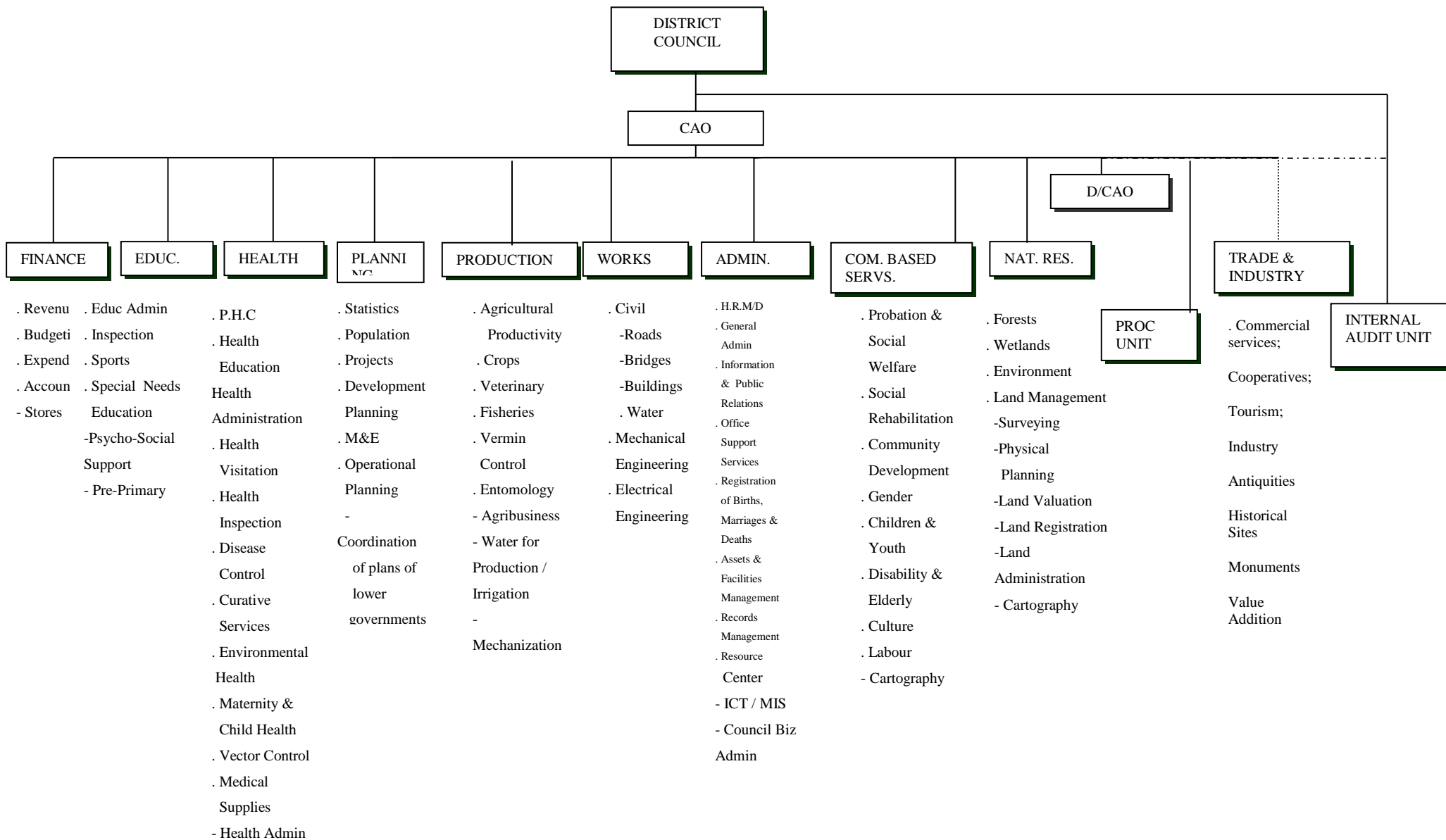
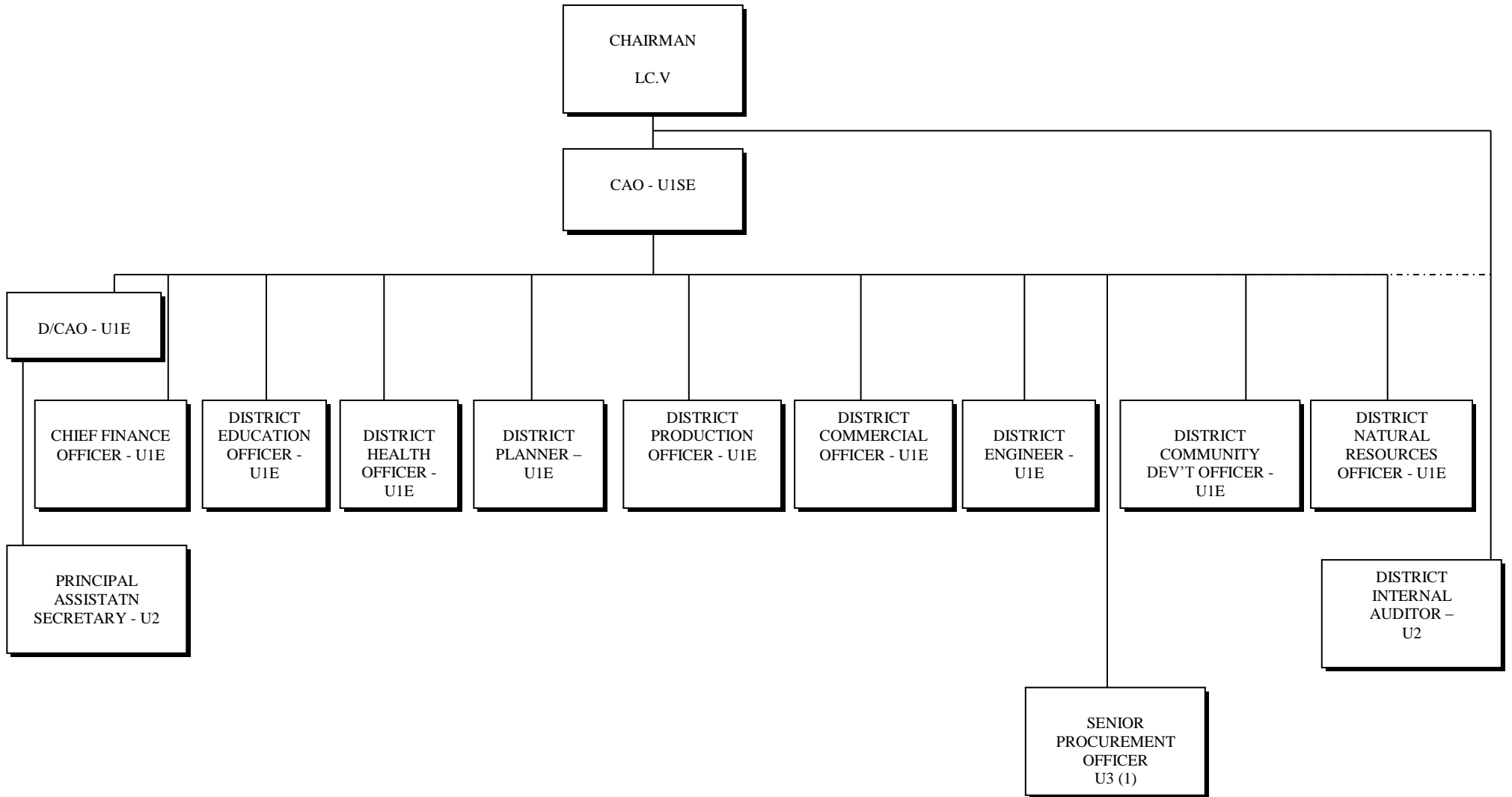


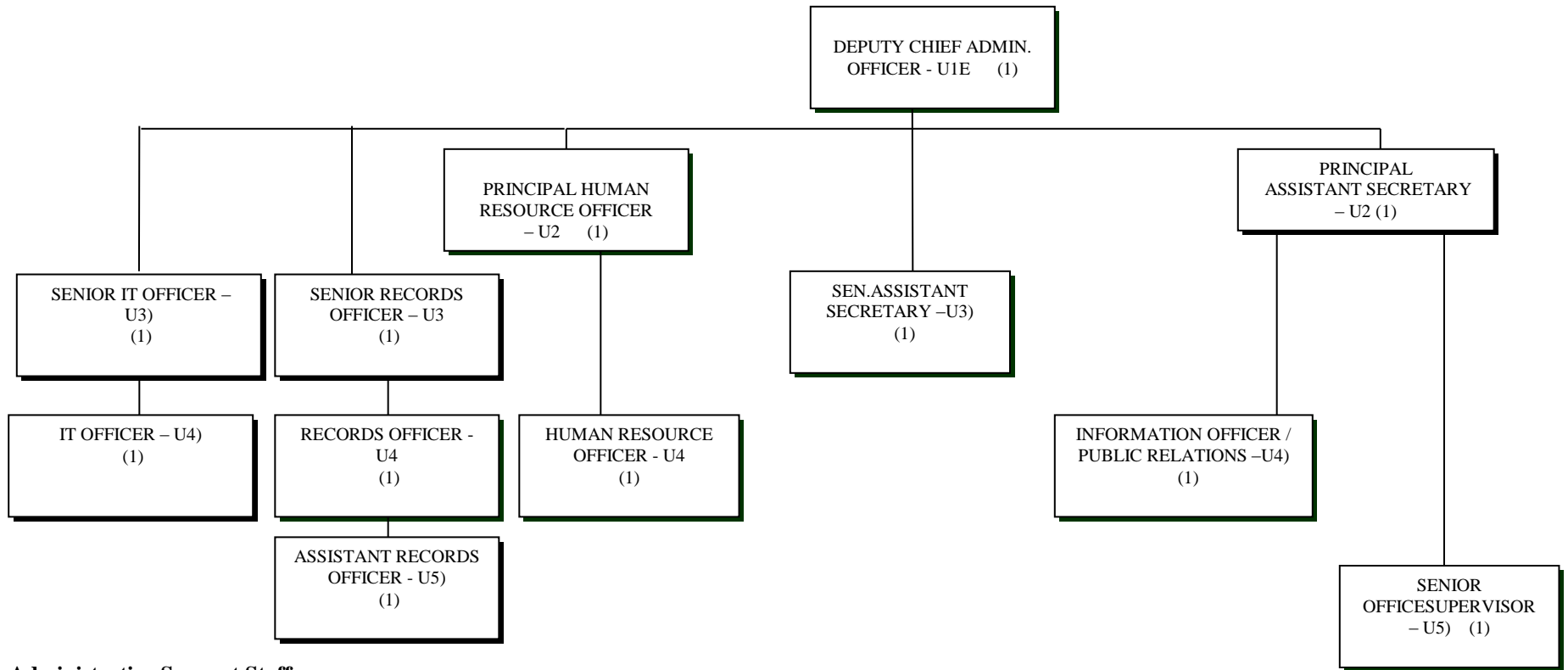
APPROVED DISTRICT MACRO STRUCTURE



APPROVED STRUCTURE FOR TOP MANAGEMENT



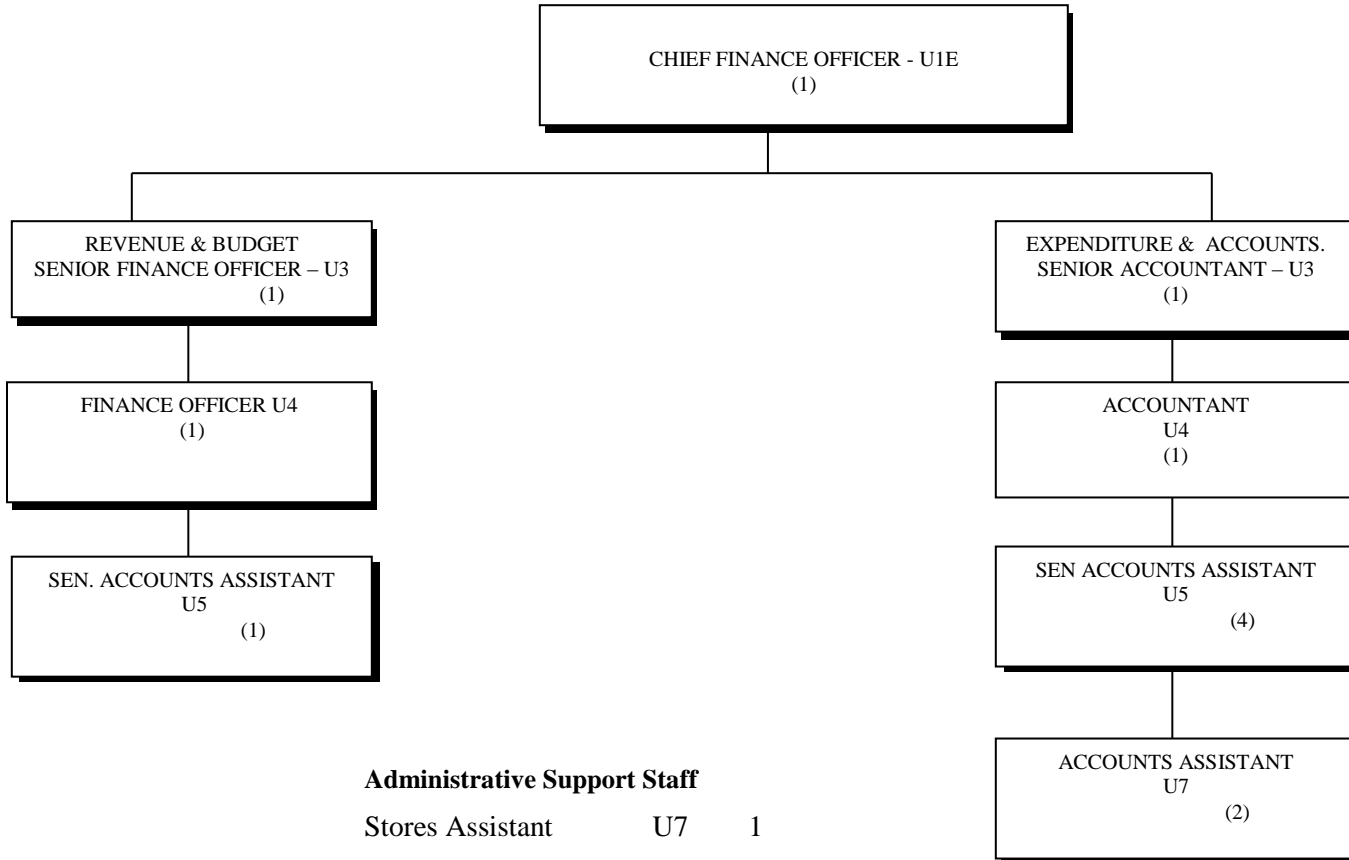
APPROVED STRUCTURE FOR ADMINISTRATION



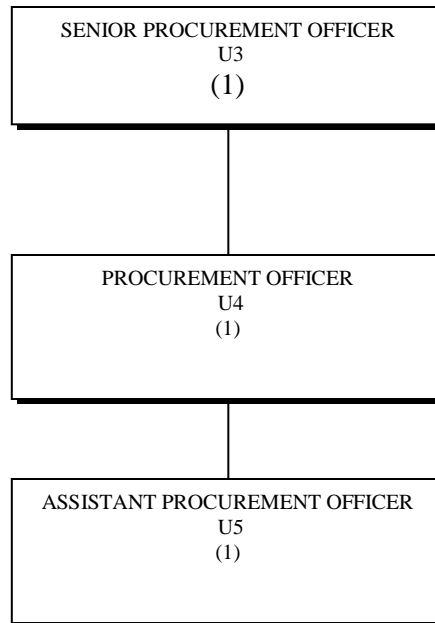
Administrative Support Staff

Personnel Secretary	U4	2
Stenographer Secretary	U5	3
Pool Stenographer	U6	2
Office Typist	U7	2
Office Attendant	U8	7
Driver	U8	2

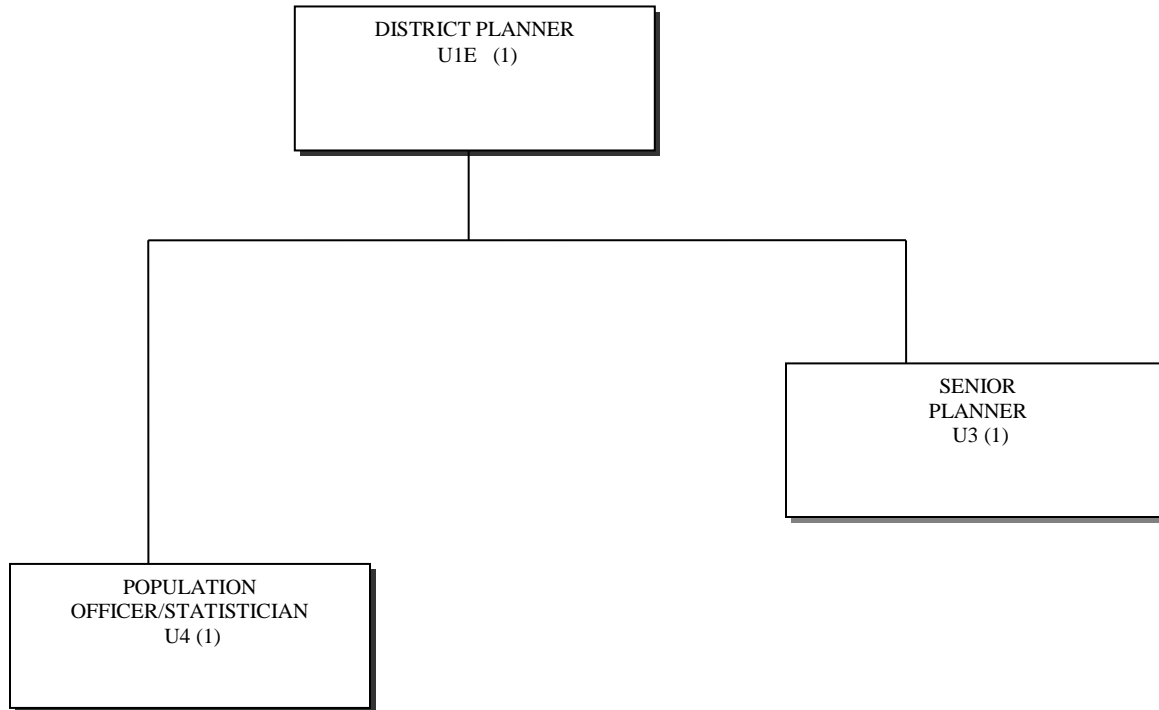
APPROVED STRUCTURE FOR FINANCE



APPROVED STRUCTURE FOR PROCUREMENT UNIT



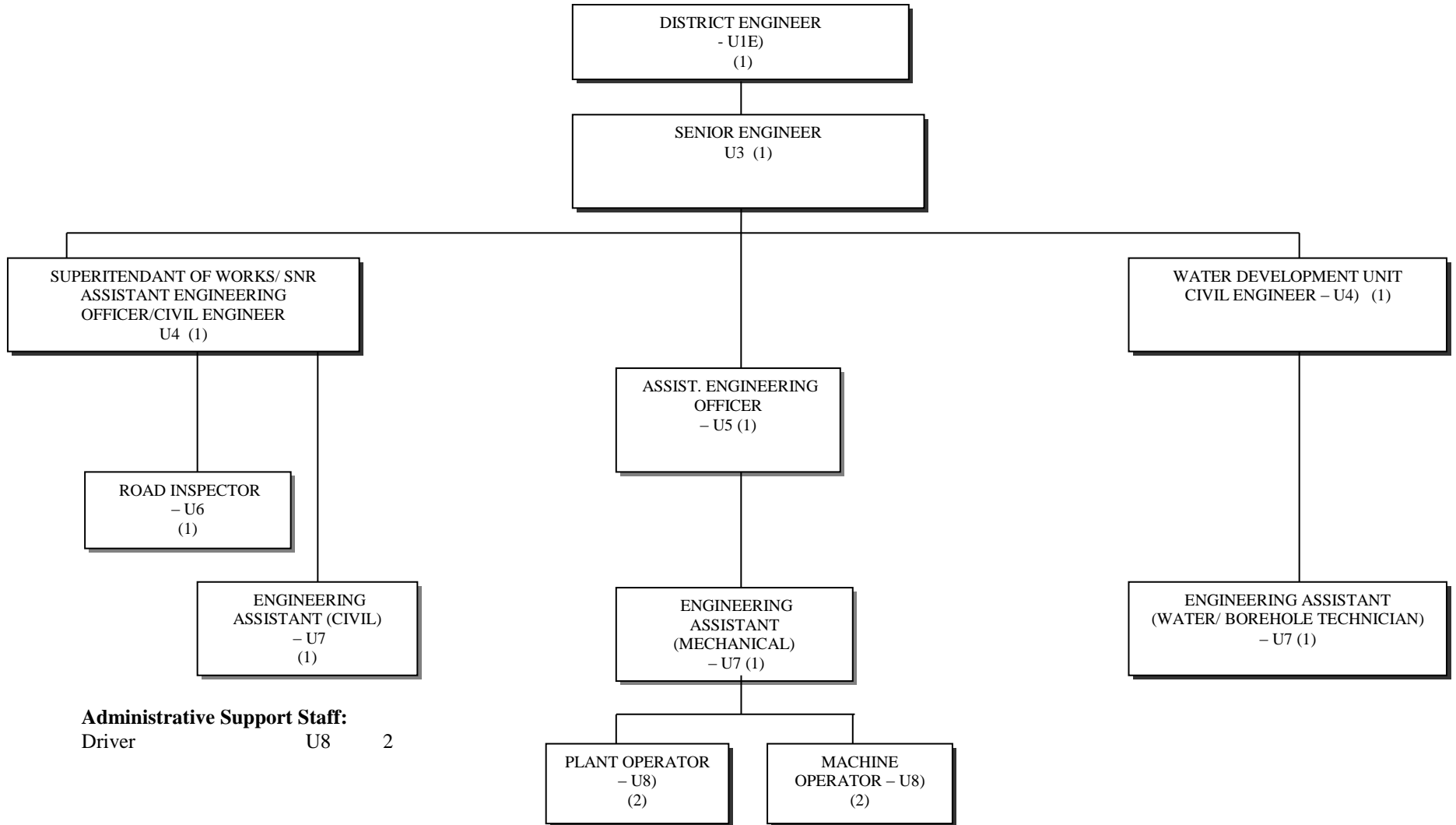
APPROVED STRUCTURE FOR PLANNING



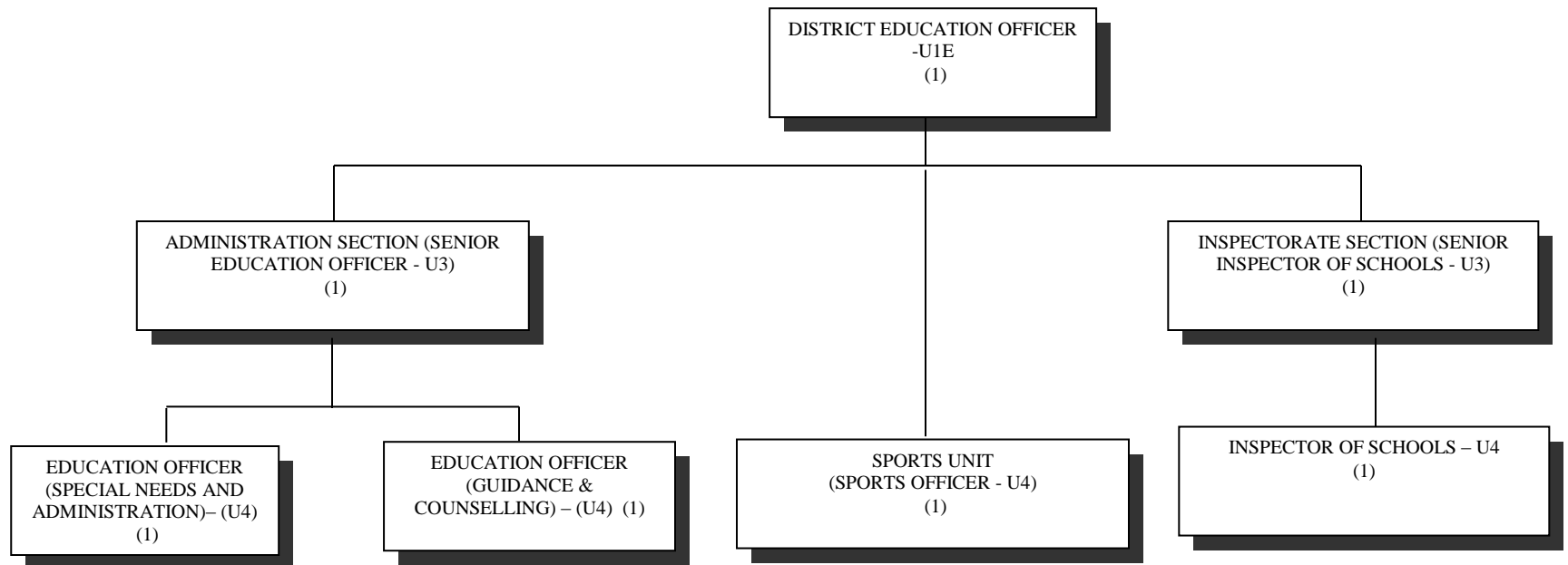
Administrative Support Staff

Driver U8 1

APPROVED STRUCTURE FOR WORKS



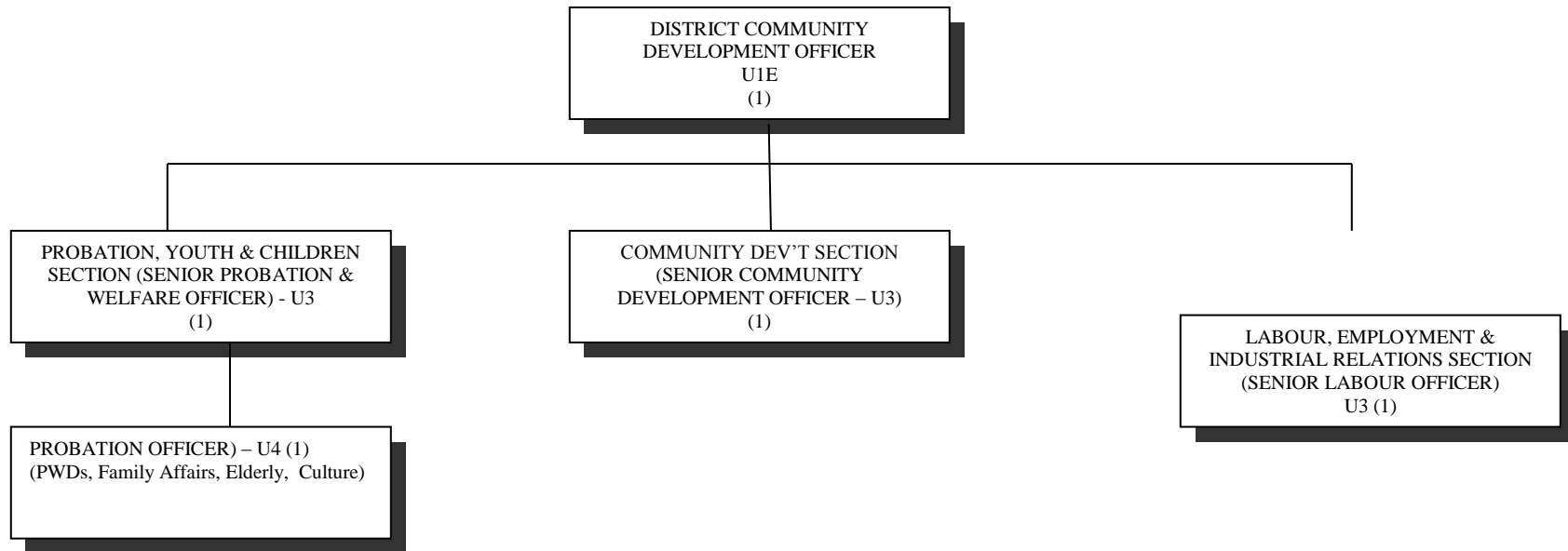
APPROVED STRUCTURE FOR EDUCATION



Administrative Support Staff:

Driver U8 1

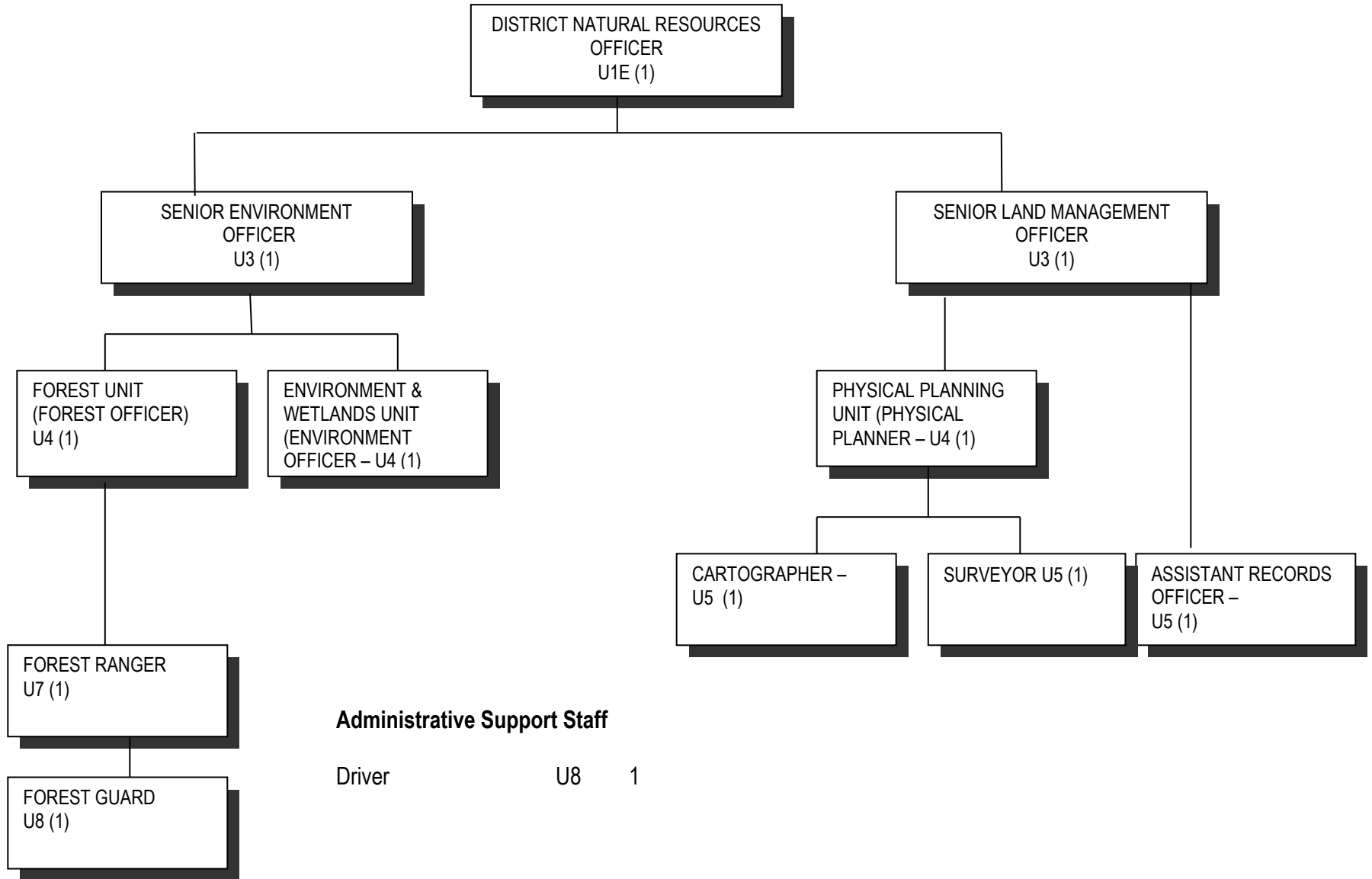
APPROVED STRUCTURE FOR COMMUNITY BASED SERVICES



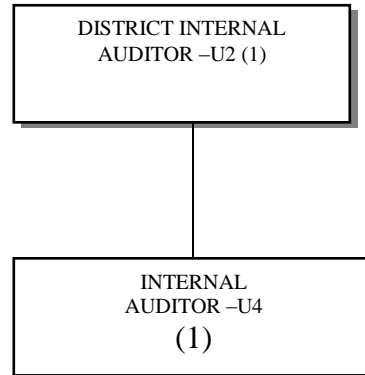
Administrative Support Staff:

Driver U8 1

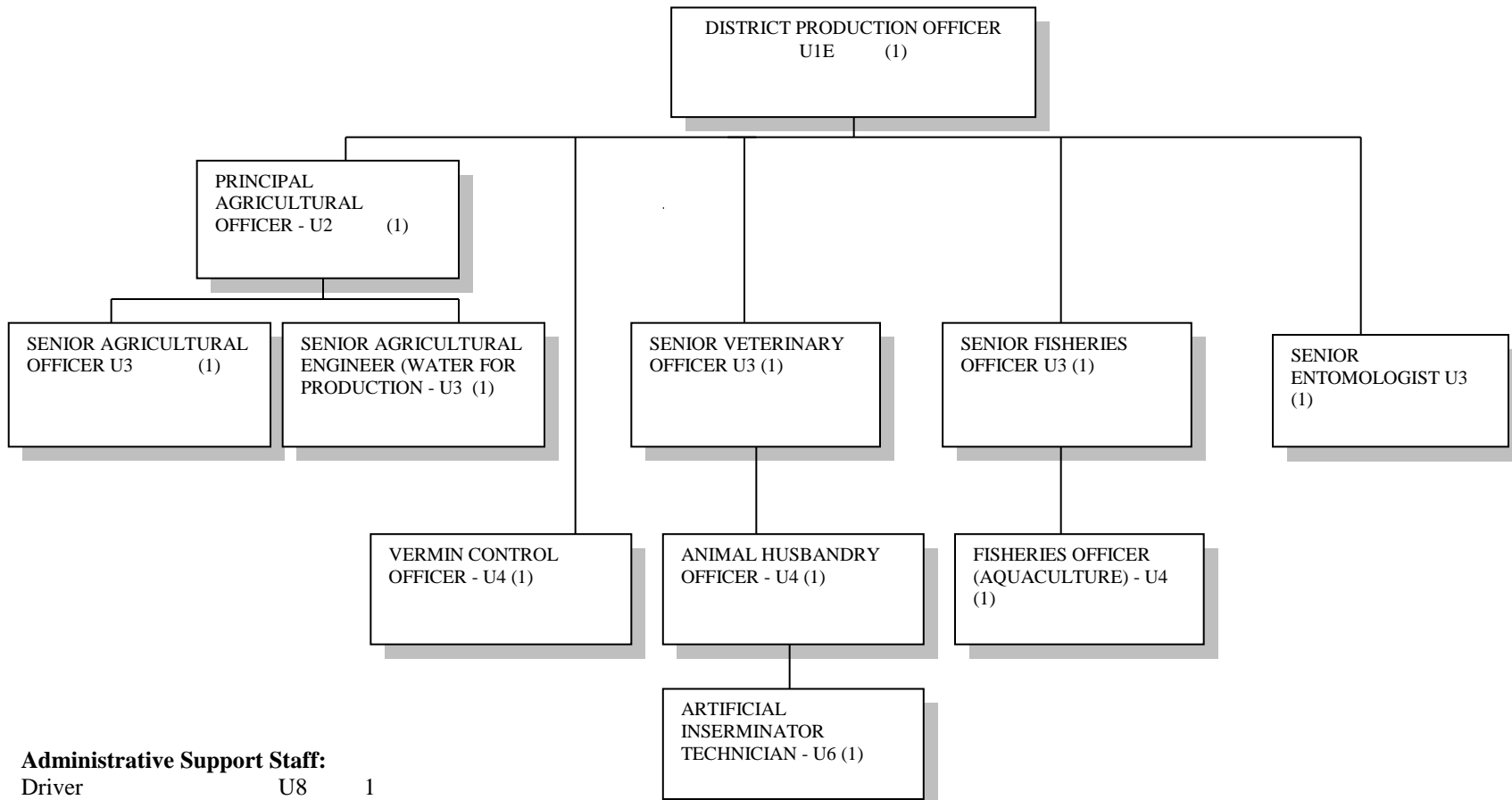
APPROVED STRUCTURE FOR NATURAL RESOURCES



APPROVED STRUCTURE FOR INTERNAL AUDIT



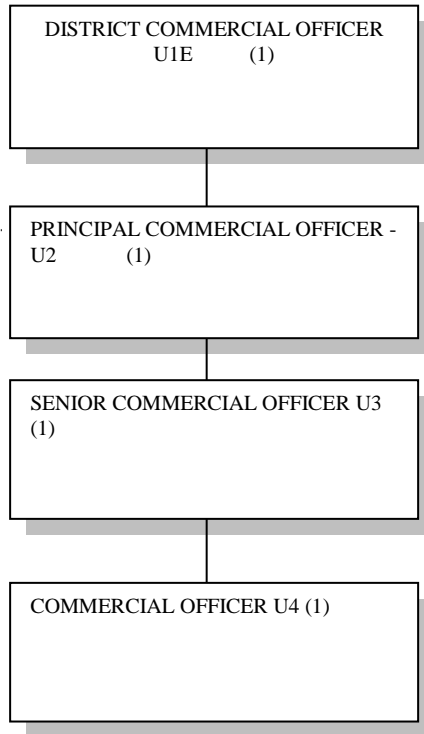
APPROVED STRUCTURE FOR PRODUCTION



Administrative Support Staff:

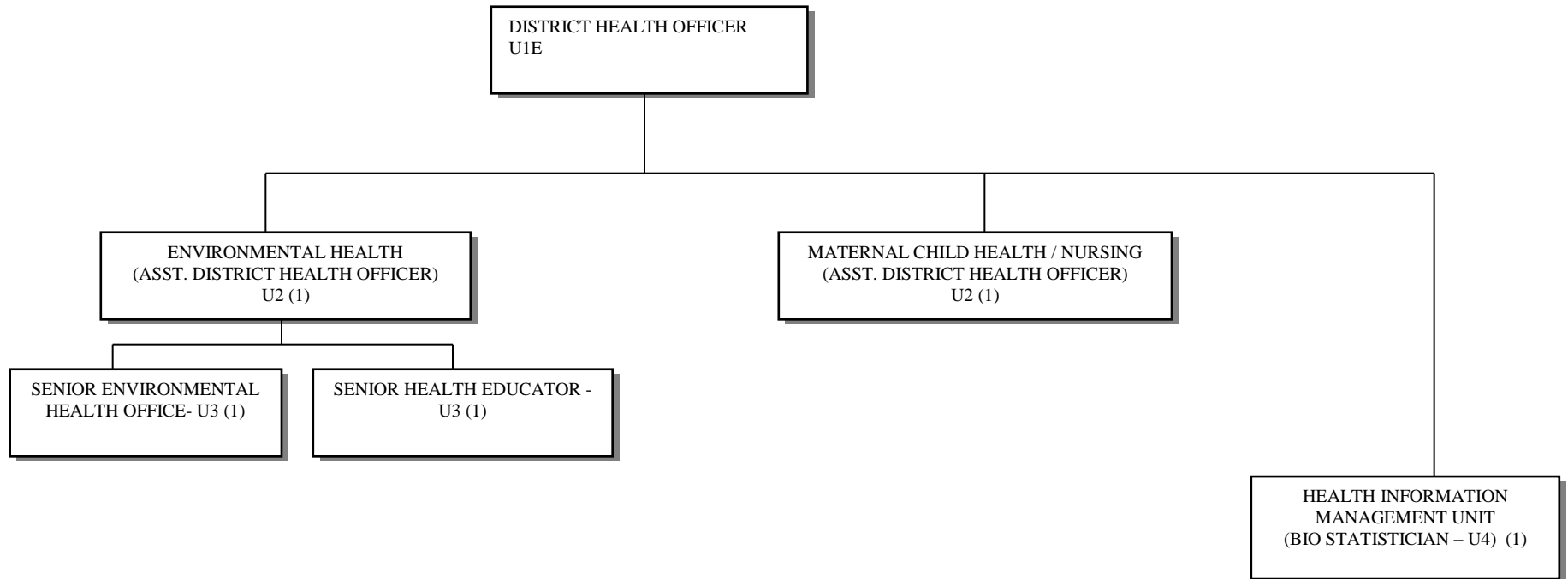
Driver	U8	1
Stores Assistant	U7	1

APPROVED STRUCTURE FOR TRADE AND INDUSTRY



Administrative Support Staff:
Driver U8 1

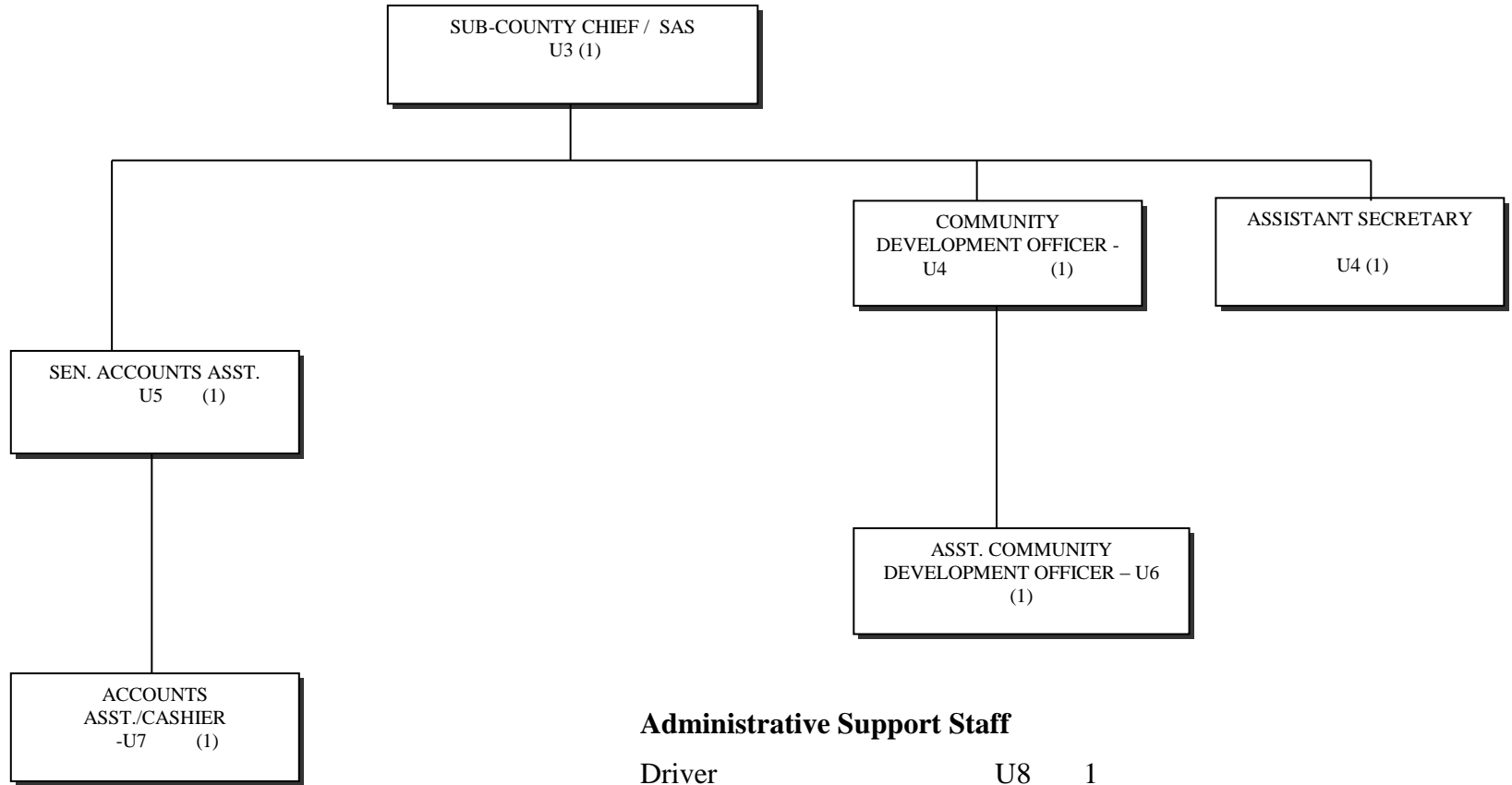
APPROVED STRUCTURE FOR HEALTH SERVICES DEPARTMENT



Administrative Support Staff

Driver	U8	1
Stores Assistant	U7	1
Cold Chain Technician	U6	1

APPROVED STRUCTURE FOR A SUB-COUNTY



Administrative Support Staff

Driver	U8	1
Stores Assistant	U7	1