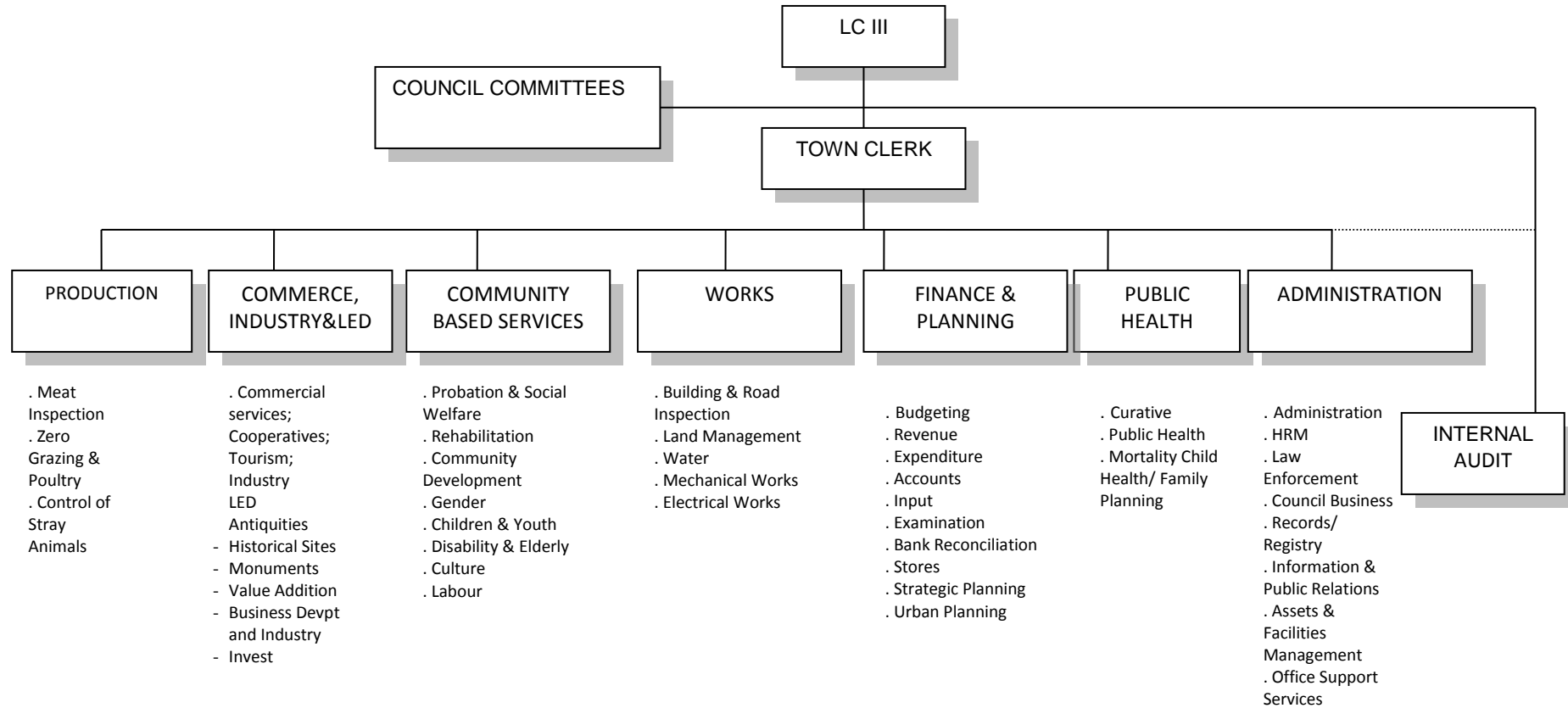
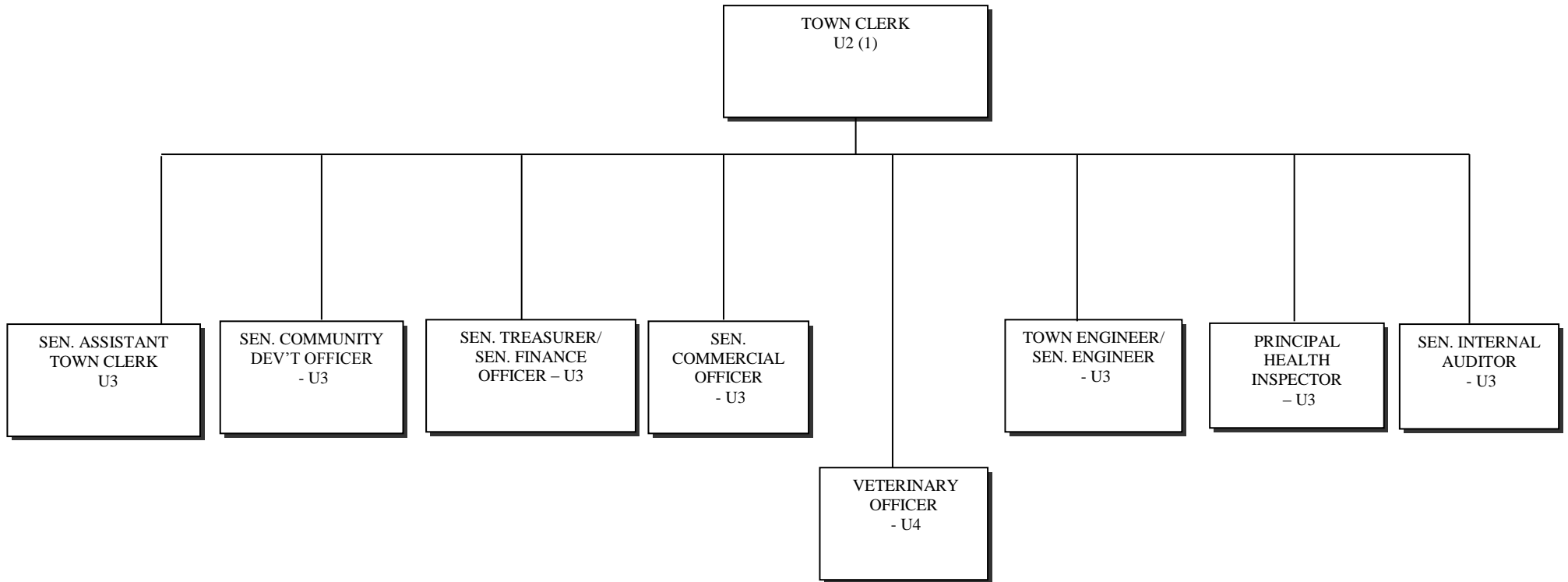


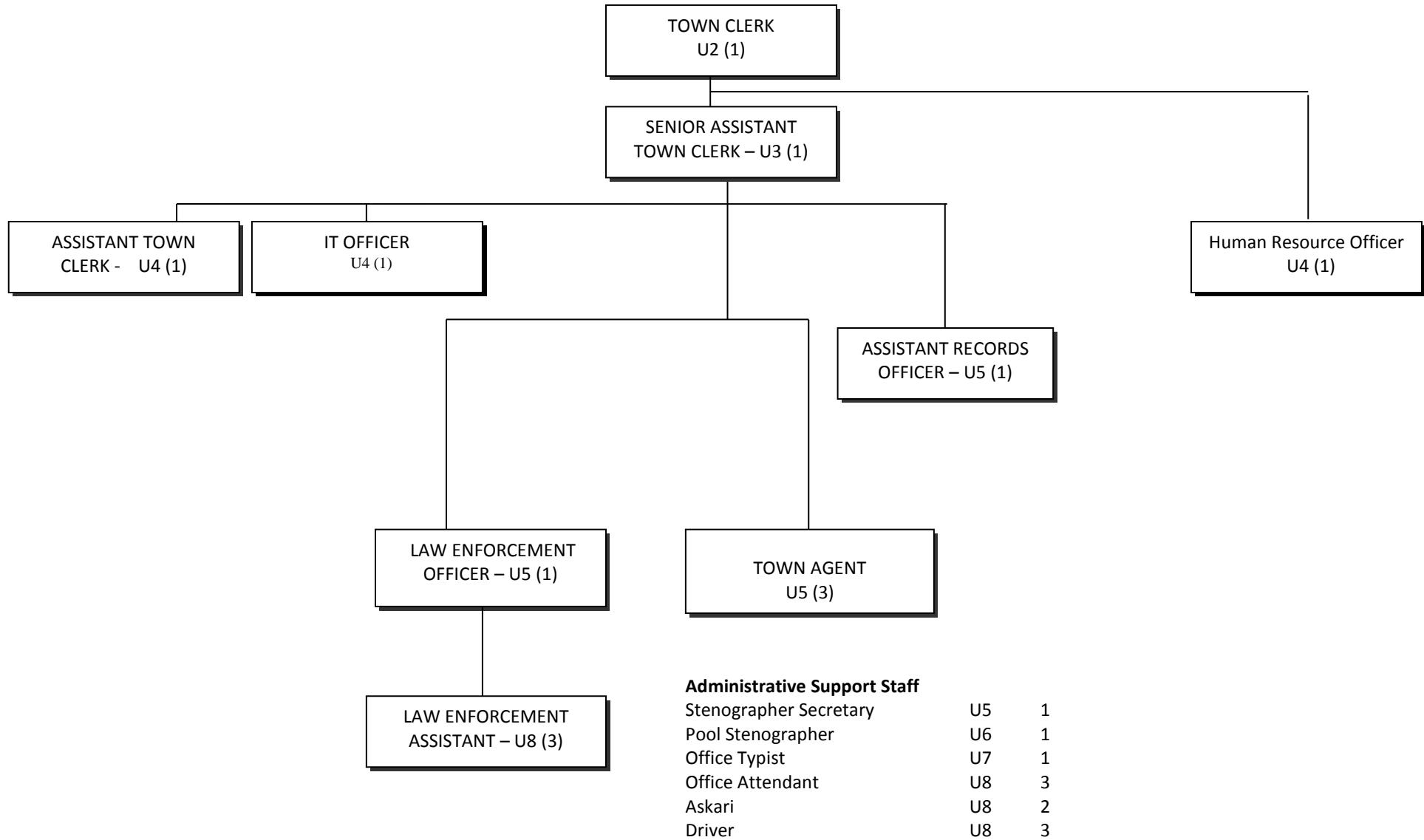
APPROVED FUNCTIONAL STRUCTURE FOR A TOWN COUNCIL



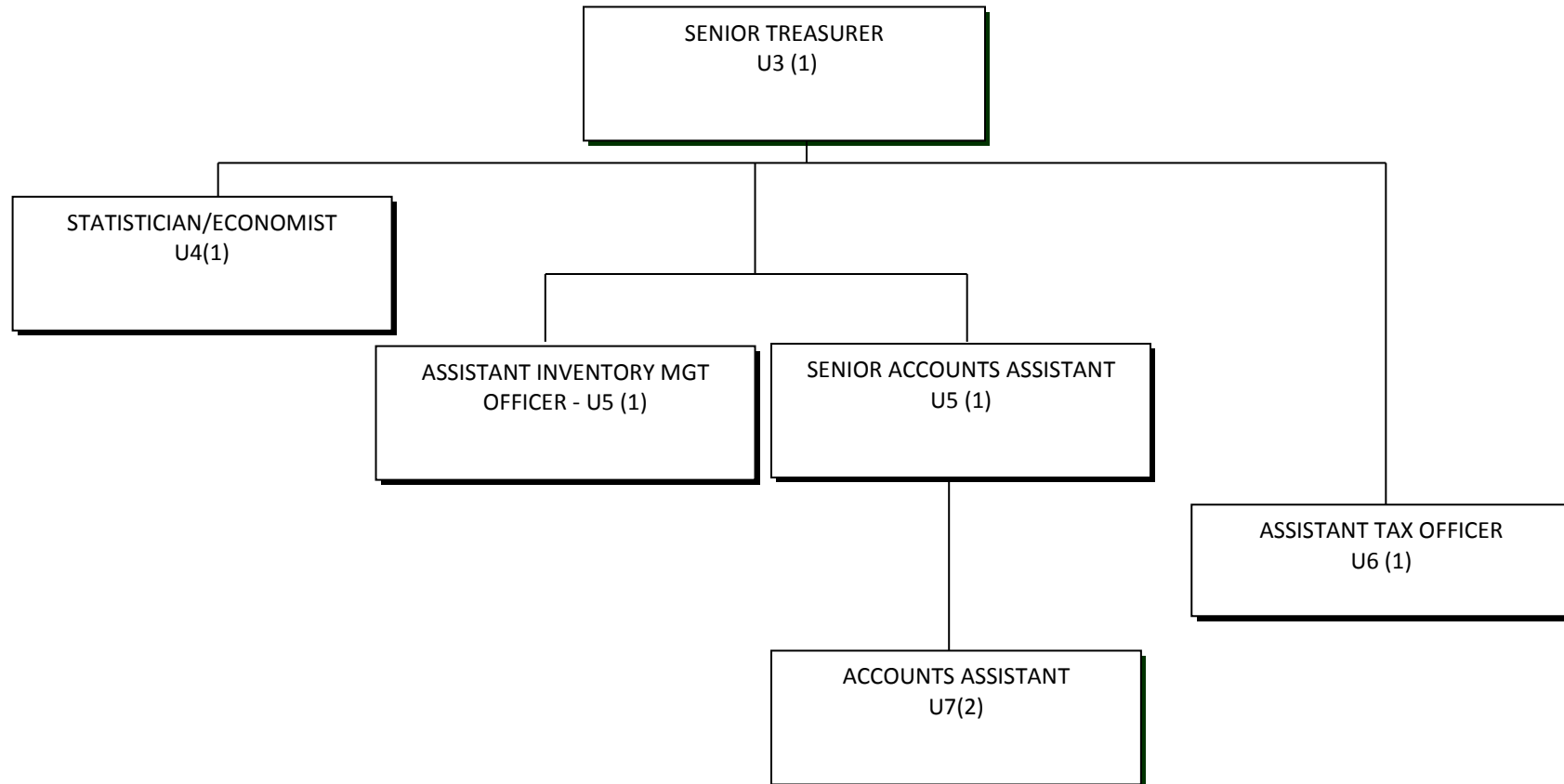
APPROVED TOP MANAGEMENT STRUCTURE FOR A TOWN COUNCIL



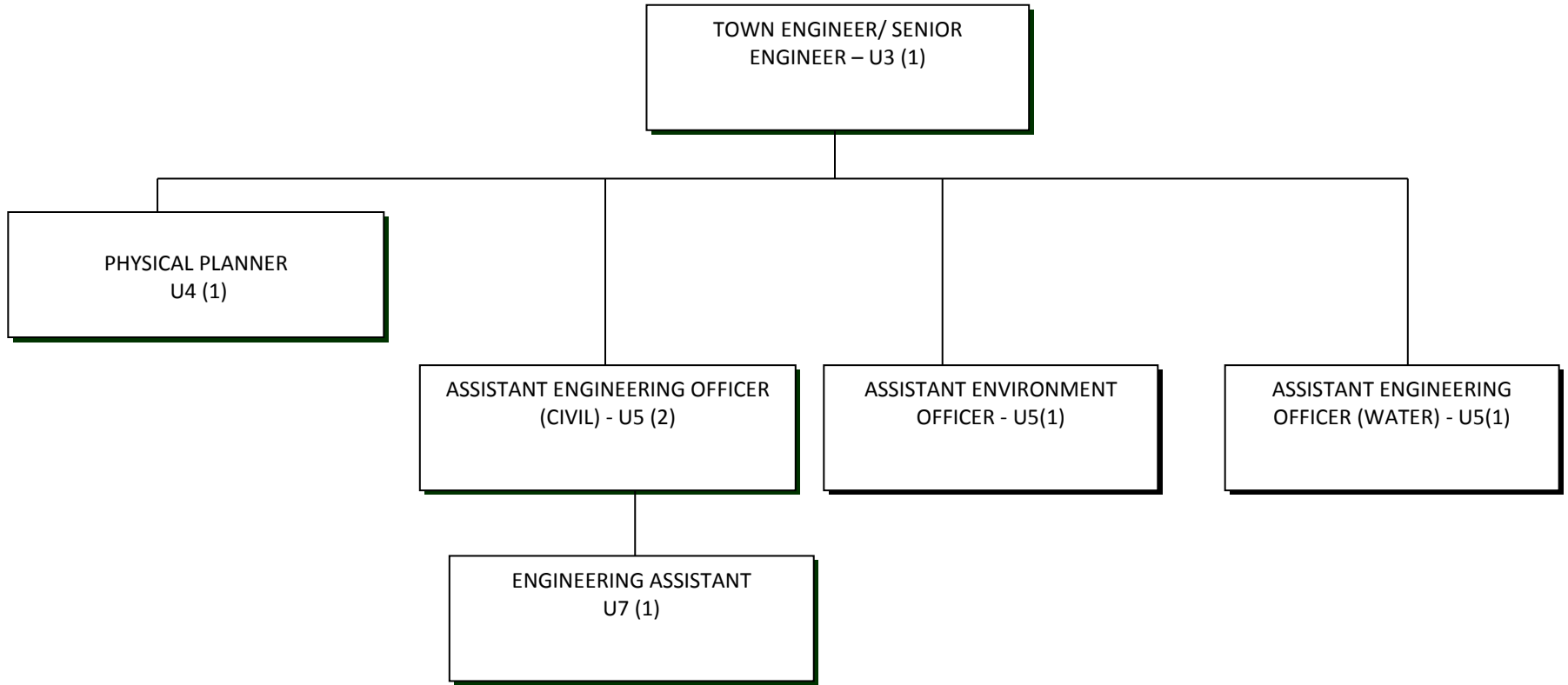
APPROVED STRUCTURE FOR ADMINISTRATION FOR A TOWN COUNCIL



APPROVED STRUCTURE FOR FINANCE AND PLANNING FOR A TOWN COUNCIL



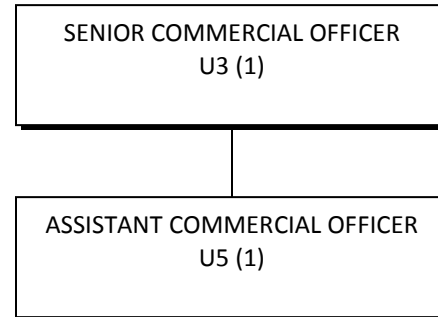
APPROVED STRUCTURE OF WORKS FOR A TOWN COUNCIL



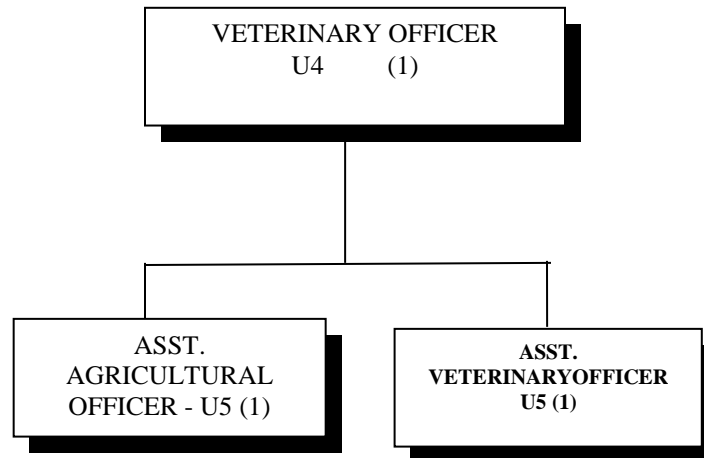
Administrative Support Staff:

Porter	U8	2
Machine Operator	U8	1
Machine Attendant	U8	1

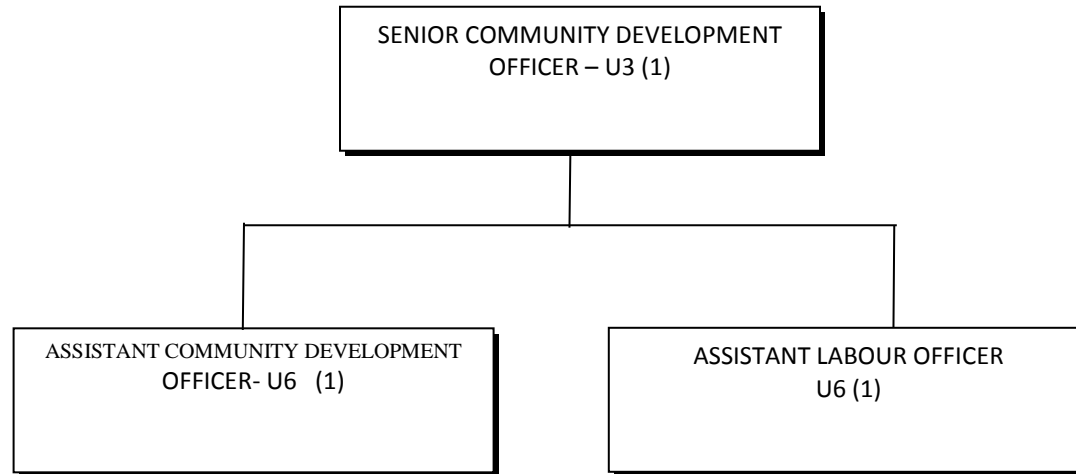
**APPROVED STRUCTURE FOR COMMERCE, INDUSTRY AND LOCAL ECONOMIC
DEVELOPMENT FOR A TOWN COUNCIL**



APPROVED PRODUCTION STRUCTURE FOR A TOWN COUNCIL



APPROVED STRUCTURE OF COMMUNITY BASED SERVICES FOR A TOWN COUNCIL



APPROVED STRUCTURE OF INTERNAL AUDIT FOR A TOWN COUNCIL

SENIOR INTERNAL AUDITOR
U3 (1)

APPROVED STRUCTURE OF PUBLIC HEALTH FOR A TOWN COUNCIL

